

**TAKACAT  
SINGLE & DOUBLE KAYAK**



**USER MANUAL  
2023**

Please be sure to observe the information on the type plate/info plate on the carrying/driving hoses.

## **Contents:**

Introduction	1
What's Included	4
Set-up	5
Dismantling	6
Towing	6
Water Drainage	6
Important notes	6
Specifications	7

## **Introduction:**

This manual has been compiled to enable you to operate your watercraft safely and with pleasure. It contains details about the watercraft itself, accessories supplied or fitted and its installations, as well as information about its operation.

Please read it carefully and familiarise yourself with the watercraft before using it.

This skipper's manual is not a course in boating safety or seamanship. If this is your first watercraft or if you have changed to a type of watercraft with which you are not yet familiar, please ensure for your own safety and convenience that you acquire knowledge of the handling and operation of the watercraft before taking command.

Your dealer or national yachting or powerboat association or yacht club will be happy to advise you of local yachting schools or recommend experienced instructors.

Make sure that the expected wind and sea conditions correspond to the design category of your watercraft and that you and your crew are able to handle the watercraft in these conditions.

You can find the design category for the relevant models at "Specifications" at the end of the manual.

This manual is not a detailed maintenance or troubleshooting guide. In case of difficulties, please contact the kayak builder or his representative. If a maintenance manual is provided, use it for servicing the watercraft.

Use only trained and competent personnel for maintenance, repairs or modifications. Modifications that may affect the safety characteristics of the watercraft must be assessed, carried out and recorded by professionals. The boat builder cannot be held responsible for modifications to which he has not agreed.

In some countries, a driving licence or authorisation is required or special regulations apply.

Always maintain your watercraft properly and take into account the wear and tear that occurs over time and through frequent use or improper use of the watercraft.

Any watercraft, no matter how strongly built, can suffer serious damage from improper handling. This is not compatible with safe boating. Always adjust the speed and direction of the watercraft to the sea conditions.

If your watercraft is equipped with a life raft, read its operating instructions carefully. The watercraft should have the appropriate safety equipment (life jackets, safety belts, etc.) on board according to the type of watercraft, weather conditions, etc. This equipment is compulsory in some countries. The crew should be familiar with the use of all safety equipment as well as manoeuvring in emergencies (man overboard recovery, mooring, etc.). Sailing schools and clubs regularly organise training courses.

All persons should wear a portable buoyancy aid (lifejacket/personal flotation device) when on deck. It should be noted that in some countries there are legal requirements to wear a buoyancy aid that complies with national rules at all times.

**PLEASE KEEP THIS MANUAL IN A SAFE PLACE AND HAND IT OVER TO THE NEW OWNER WHEN YOU SELL THE WATERCRAFT.**

- **WARNING - When loading the watercraft, never exceed the maximum recommended load. Loading must always be done carefully, distributing the loads appropriately to maintain the design trim. Heavy loads must be placed as low as possible.**
- **WARNING - Do not exceed the maximum recommended number of persons. Regardless of the number of people on board, the total weight of people and equipment must never exceed the recommended maximum load.**
- **WARNING - CAUTION IN THE EVENT OF SLOW WINDS AND FLOODS. • Caution - Only use the appropriate towing rings in the bow and stern area for towing the kayak. Failure to do so may result in damage to the hull.**
- **Caution - There should be no loose items in the kayak. Always ensure that all items, including any paddles, anchors etc., are securely stowed in a suitable bag and that it is also securely fastened.**

**What's Included:**

The delivery of your Takacat Kayak includes the following components:

- Seat/seats
- Paddle (s)
- Repair kit incl.
- Hand air pump
- Webbing

Depending on national regulations, additional items such as emergency signals, fire extinguishers, navigation lights, anchors, bilge trowels etc. must be carried.

Please inform yourself in your own interest about the country-specific requirements.

## Set-Up



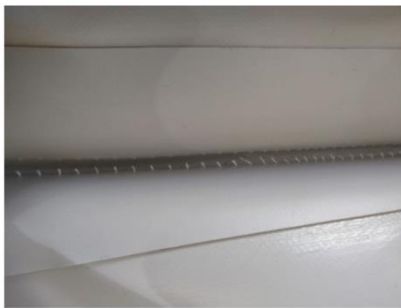
**Step 1:** Remove the tube set from the carrying bag and lay it spread out on a flat surface. Check that the valve plugs are in the filling position.

**Step 2:** Set the inlet valves in the rear area all to pump position. Insert the tube valve (HALKEY ROBERTS) of the air pump tube into the corresponding inlet valves one after the other, lock it correctly and pump up the driving tubes of the Takacat to at least 3psi. **The maximum chamber pressure for the driving tubes must not exceed 4psi.**

The tube chambers are equipped with safety pressure relief valves in the bow area so that any excess pressure can be compensated. You can check the correct filling with the pump's pressure gauge, or you can use a SUP electric pump with the appropriate adjustment options. After completion

of the close the valves with the corresponding caps.

*When pumping, always ensure that the valve adapter is correctly locked and keep a proper distance during the pumping process so that no injuries occur in the event of the air hose popping off!*



**Note - fixing seam:** When you have inflated the tubes, you will notice a seam that has come apart. This seam is not a defect but a so-called fixation seam that is set during production so that the connecting base can be glued at a right angle to the two inner tubes. When inflating, this fixing seam opens and the separated stitching threads can be seen, which rub away over time.

**Step 3:** Remove the high-pressure floor and place it snugly between the support tubes. The Halkey-Roberts valve must also

be in the stern area. Fix the two floor fixings in the bow and stern area with the straps supplied. Set the valve pin to pump position and pump up the high pressure floor to at least 8psi (max. 10psi).

Make sure that the valve is correctly seated and positioned between the support tubes. After the pumping process is finished, close the valve with the corresponding cap.

If you want to use an electric pump, then you must make sure that the pump can build up at least bar 1 pressure.

Always make sure that the valve adapter is correctly locked and keep a proper distance during the pumping process so that no injuries occur in the event of the air hose popping off!

**Step 7:** Put the individual parts of the two paddles together correctly until the locking heads are clearly visible and click into place and adjust the paddles to your body size.

**Step 8:** The seats supplied are positioned on the associated D-rings between the hoses.

## Dismantling

**Step 1:** Open the two floor fixings in the bow and stern area. Pull out the two fixation straps completely.

**Step 2:** Open the cap of the Halkey-Robert valve of the high pressure base and set the valve pin to the air release position. When the high-pressure base is empty of air, remove it and roll it up in the direction of the valve. This will automatically release the remaining air.

**Step 3:** Open the two valve caps of the Halkey-Roberts valves of the two driving hoses and set the valve pins to the air release position. When the two driving hoses are deflated, lay them on top of each other and roll them up in the direction of the Halkey-Roberts valves, soaking in the remaining air. Now you can store the hoses in the carrying bag.

**Step 4:** The accessories supplied, including the high-pressure base, can also be stowed in the carrying bag.

## Towing

Only use the towing ring on the bow for towing.

## Water Drainage

The TAKAYAK-300/395 has a so-called forced bilge because of the open bow and stern.

## Important notes:

1. The tubes of the TAKAYAKs are equipped with safety pressure relief valves in the bow area. This ensures that any dangerous overpressure is discharged in the event of strong sunlight in order to prevent damage to the tubes. If the outside temperature subsequently drops again, this can lead to the air pressures no longer representing the correct values. Therefore, always check the correct air pressure values of the tubes and the high-pressure floor before each journey. Always carry a hand pump to compensate for any pressure changes.



Heat changes during the day - Be sure to check the pressure values of all air-filled components and correct them to the correct pressure values to avoid damage. The high-pressure floor is not equipped with a pressure relief valve. Therefore, avoid too intensive sunlight on the high-pressure floor - check and correct the pressure values if necessary.

2. When the kayak is not in use, we strongly recommend storing it in the shade or under a cover to avoid excessive heating and pressure build-up in the carrying tubes and high pressure floor. An inflatable kayak left inflated for several days may lose pressure. According to ISO, 6185a pressure loss of 20% within hours<sup>24</sup> is permissible.
3. With inflatable kayaks, it can happen that the valve seats settle somewhat after production due to heat fluctuations and movement, causing air to escape. For this case, there are two valve keys in the repair box. The valve spanner with the smaller teeth is compatible with the air inlet/outlet valves, the valve spanner with the coarser teeth is compatible with the two overpressure safety valves. Using the appropriate valve spanner, turn the valve insert slightly to the left so that the lower sliding friction can take effect and then hand-tighten to the right. => <https://www.youtube.com/watch?v=wLY4nj24-BE>
4. The carrying tubes of the Takacats are provided with protective strips on the undersides. Nevertheless, you must avoid contact with sharp-edged objects to prevent damage. It is strongly advised to move the inflatable kayak with extreme care in areas with shallow water.
5. After each use of seawater, it is recommended to clean the Takacat with fresh water. For further care, the market offers a wide range of cleaning and care products.
6. In your own interest and in the interest of any passengers, make sure that all the necessary safety precautions have been taken and that all the necessary rescue equipment is carried and, if necessary, put on.
7. If you do not have formal boating training, we recommend that you attend a boating safety course where you will learn the skills of good seamanship, such as navigation, safety, environment, boat handling, line handling, anchoring, troubleshooting engine problems and appropriate responses in emergencies. The knowledge you learn in such a course can not only be helpful but also life-saving in an emergency.

## Specifications

- Length: Single – 300cm / Double - 395cm
- Width: 100cm
- Draught: 15cm
- Tube diameter: 29cm
- max. tube pressure: 4psi
- Max. High pressure bottom: 10psi
- Max. Persons: 1 / 2
- Max. Load: 160 / 260kg
- Design Category: D
- Manufacture: ISO 6185-2 Category III
- Inner length: 275 / 370cm
- Inner width: 43

- Bow height: 21 cm
- Stern height: 18cm
- Weight high-pressure floor: approx. 5.5kg (395) - approx. 3.5kg (300)
- Weight of driving tubes: approx. 14.5kg (395) - approx. 10.5kg (300)  
(complete with connecting floor between the driving tubes)
- Total weight Takayak-395: 20kg (without seats and without paddles)
- Total weight Takayak-300: 14kg (without seat and without paddle)
- Total weight filled transport bag: 24kg (395) - 18kg (300)  
(depending on hand pump model)
- Carrying bag dimensions: 120 x 40 x 30cm (length/width/height)

All specifications are approximate and may deviate plus/minus 2-8%. Deviations in symmetry in the surface finish (wrinkles, bubbles, pressure marks, kinks, machining marks, colour deviations) as well as in the horizontal and vertical alignment and positioning of the individual components in relation to each other are due to design, physics and production technology.

#### **Category D**

A boat assigned to design category D is intended for operation in wind conditions with Beaufort strengths up to 4 and the corresponding wave heights (occasional wave heights up to 0.5 m). Such conditions may occur on sheltered inland waters and in coastal waters in good weather conditions.

All information contained herein has been compiled with the utmost care and to the best of our knowledge. Nevertheless, errors cannot be completely ruled out. For this reason, Takacat GmbH feels compelled to point out that it can accept neither a guarantee nor legal responsibility or any liability for consequences resulting from incorrect information.

The specifications of the products which Takacat distributes and/or offers as a dealer have been taken over from the respective manufacturer. Takacat accepts no liability for their accuracy.

Maximum specifications apply under optimum conditions (environment, system configuration etc.).